

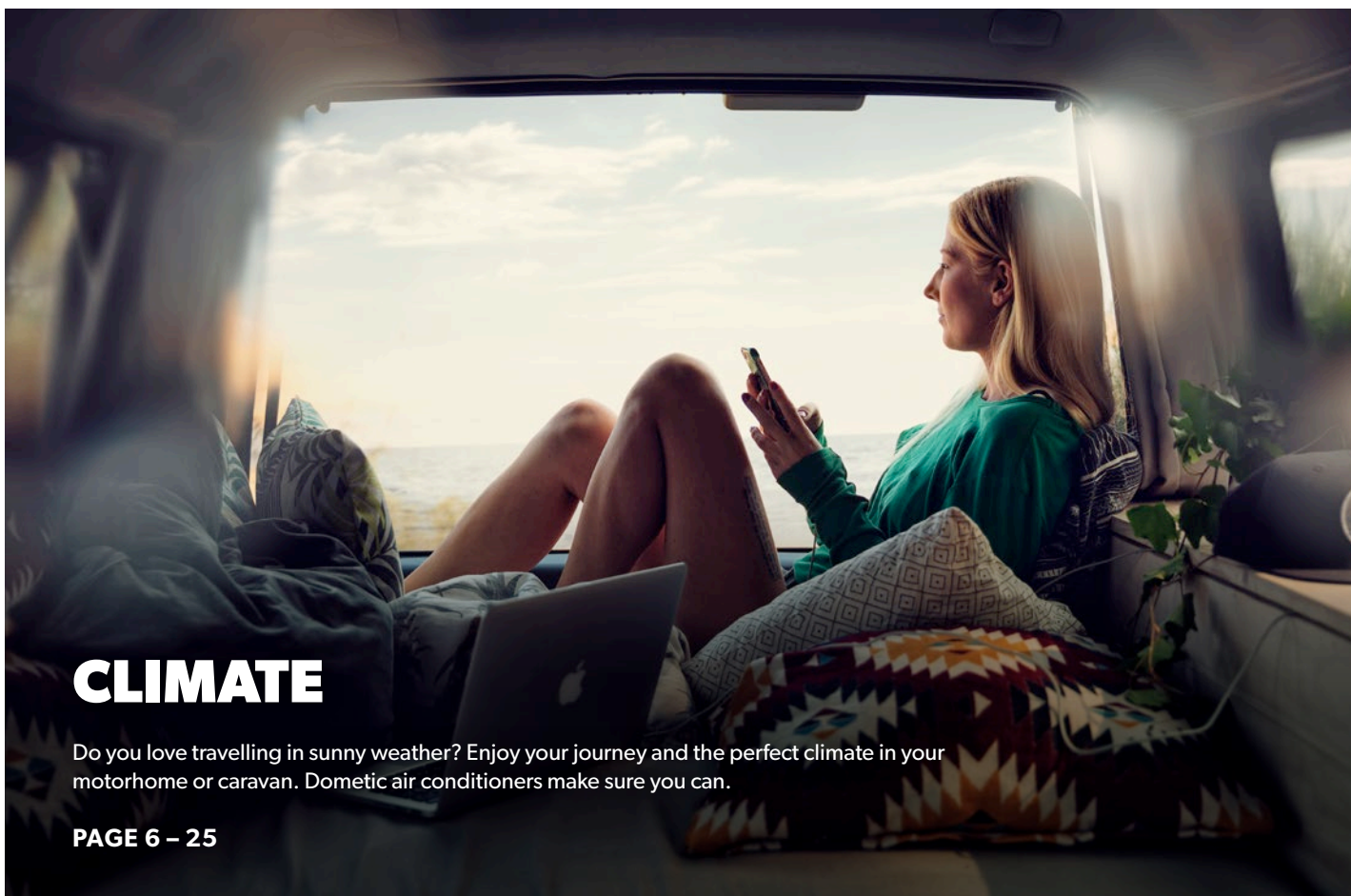
CATALOGUE 2020

# CAMPER VAN ACCESSORIES

THE LARGE ACCESSORY RANGE FOR VANS

Mobile living made easy.

 **DOMETIC**



## CLIMATE

Do you love travelling in sunny weather? Enjoy your journey and the perfect climate in your motorhome or caravan. Dometic air conditioners make sure you can.

PAGE 6 – 25



## HYGIENE & SANITATION

Enjoy a pleasant feeling of freshness on board wherever the road takes you. Reap the benefits of our decades of research into mobile sanitation systems.

PAGE 37



## ENERGY & CONTROL

Smart electronics and handy accessories ensure you will always have enough power on board, even in remote locations where mains power is unavailable.

PAGE 35



## FOOD & BEVERAGE

Cook what you like, eat with friends, keep your provisions nice and fresh throughout the journey. We have taken care of every detail.

PAGE 26 – 36

## CLIMATE

Air conditioners	6 – 7
Awnings	8 – 18
Windows	19 – 25

## FOOD & BEVERAGE

Refrigeration	26 – 31
Coolboxes	32 – 35
Cooking	36

## ENERGY & CONTROL

Portable lithium battery	35
--------------------------	----

## HYGIENE & SANITATION

Portable toilets	37
------------------	----

## SAFETY & SECURITY

Driving support	38 – 39
-----------------	---------

## DOMETIC ON THE WEB

Here's where you can find the complete Dometic range, with detailed information about all products. Plus, interesting facts about our company and download links for all our catalogues.

[DOMETIC.COM](https://www.dometic.com)



## SAFETY & SECURITY

Sit back and relax. Dometic accessories let you enjoy the most precious weeks of the year in complete comfort and safety.

PAGE 38 – 39

# MOBILE LIVING MADE EASY.

## DOMETIC AMBASSADORS

Many people talk about living a simpler life, with fewer belongings, less stress and more time for what really matters. But it usually stops at talk. Not this time. We've dedicated this page to doers – brave souls who have embraced the dream of a different life and thrown themselves into living mobile. To us, they're all heroes. These are their stories.

308D

Read more at: [DOMETIC.COM](https://www.dometic.com) > OUR BRAND > DOMETIC AMBASSADORS

MARIA VANONEN

# A SIMPLE LIFESTYLE, CLOSE TO NATURE



As a child, Finnish entrepreneur and vanlife enthusiast, Maria Vanonen traveled all over with her grandfather who built his first van in the 1970s. Maria would sleep in the back of the van as they roamed from sight to sight, instilling in her love for adventure and a life-long desire for the simplicity of mobile living. When it comes to making her own vanlife adventuress, Maria started by taking a trip to New Zealand ten years ago. She slept in a

station wagon with her surfboard on the roof so she could wake up on the beach and catch the best waves without obstacles or hotel fees. This allowed her to live in the moment and spend more time making memories than making plans.

Now, she travels with her beloved jack russell terrier, Yoda, in their own DIY camper van that Maria has affectionately dubbed Urho.

Everything she needs fits perfectly in the small space of the rebuilt 1995 Mercedes 308D van, which first enjoyed a career as a German mail delivery van. Two years ago, Maria sold most of her possessions and began working nonstop to transform Urho into a fully functioning cabin on wheels with the help of family and friends, online tutorials, and a lot of hard work. The final step was a coat of light blue paint to make



Urho complete. The vanlife lifestyle is about staying close to nature and getting to feel fully immersed in one's surroundings. Essential to the journey is the right equipment to make every trip safe and smooth so the only concern Maria has is where to go next. For a space so small but mighty, the gear needs to be compact, lightweight, and reliable for off-grid adventures.

For any mobile lifestyle, keeping food cold and fresh is a daily challenge. Coolers need constant attention to keep food dry and ice can be hard to come by when camping in remote locations. Standard portable refrigerators are more suited for a dorm room than for the great outdoors and Maria found that most could not keep up with her needs in the summertime. For this reason, Maria chose the Dometic Coolmatic CRX 80S, a 78 liter compressor refrigerator with a

stainless steel design. It runs quiet and offers temperature control in any environment. The fridge can hold enough food to keep Maria supplied for two weeks and also has an optional 7.5 liters of freezer space when needed. This was the first of a long line of Dometic products that have been used to make Urho the perfect home on the go.



[instagram.com/mariavanonen](https://www.instagram.com/mariavanonen)



# DOMETIC FRESHJET 2000 THE COMPACT CLASS

## CLIMATE COMFORT FOR CAMPERVANS

Compact size, light weight, gentle yet efficient air flow: This 2000 W roof air conditioner is the ideal climate solution for campervans. It cools and dehumidifies the air at the touch of a button, and will gladly serve as a heating as well. Dressed in dark grey, the aerodynamically shaped rooftop unit perfectly matches the design of modern campervan models.

The air distribution box of the FreshJet 2000 gives a pleasantly gentle air curtain effect. The air flows in four directions – to the front, rear, left and right. All four air streams can be adjusted individually, exactly as you need it. The temperature and blower speed can be conveniently set by remote control. More benefits: dimmable LED lighting and soft-start function for reliable start-up on campsites with an unstable power supply.



### DOMETIC FRESHJET 2000

Roof air conditioner with air distribution box, specially designed for campervans

- Ultra-compact and lightweight design
- Cools, warms or dehumidifies air at the touch of a button
- Ideal for campervans
- Cooling capacity: 2000 W
- Heating capacity: 1200 W
- Soft start – easy start-up even with low electrical protection
- Rooftop unit in dark grey – perfectly matches the design of modern campervan models

Ref. No. 9600025737



## AIR DISTRIBUTION BOX

The FreshJet air distribution box was conceived using the latest knowledge in fluid dynamics and is included in all FreshJet models

- Outstanding design
- Optimized air distribution in four directions – powerful cooling effect
- Dimmable LED lighting
- Easy maintenance (magnetic fastening)



### INTEGRATED LED LIGHTING

Can be dimmed using the remote control or the control panel



### ADJUSTABLE AIR FLOW

The direction of the air flow can be individually adjusted for all four air ducts



### EASY CONTROL

Remote control allows the convenient management of functions



PERFECT INSTALLATION RESULT WITH ADAPTER FRAME

## FRESHJET ADAPTER FRAME

A perfect fit for Fiat Ducato.

Do you have worries that the roof beading of your Fiat Ducato will make installation of a FreshJet air conditioner impossible? We've got a solution for you: the custom-designed adapter frame compensates the roof beading of your Fiat Ducato, so you will have a level surface for safe installation of a FreshJet air conditioner. As you see, Dometic has a matching solution to everything!

Ref. No. 9104114007



# PERFECTROOF PR 2000

## THE PANEL VAN ROOF AWNING

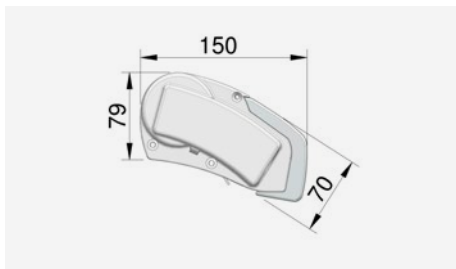
Being the flattest roof awning in the market, the Dometic PerfectRoof PR 2000 makes an ideal roof-mount solution for panel vans, smaller motorhomes and caravans. Its compact dimensions and light weight minimise the roof load, so there's still room for other accessories, such as solar panels. Moreover, it comes at a price that puts everything else in the shade, and it still provides all

key Dometic features, e.g. the seamless, high-quality awning fabric. The operation is with a telescopic crank. The support legs are neatly stored in the lead rail and can be easily folded out by a spring lock. A wide choice of adapters helps to make the awning fit on nearly all types of vehicles.



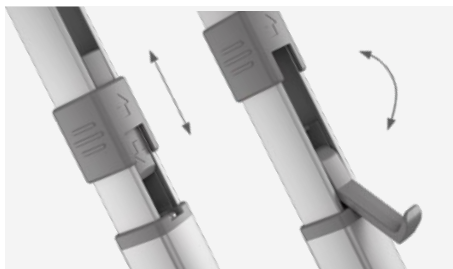
# BENEFITS OF PR 2000

- Lightweight and compact dimensions – flattest roof awning in the market
- Ideal for panel vans and small caravans
- Support legs with patented Easy Lock Flipper
- Lengths from 2.65 m up to 4.5 m, extension up to 2.5 m



## OPTIMISED DESIGN

Compact and lightweight housing



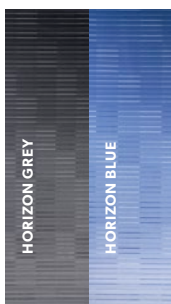
## PATENTED EASY LOCK SYSTEM

For hassle-free and safe fastening of the support legs



## TELESCOPIC CRANK

For manual operation of the very smooth running gear



## FABRIC COLOURS

The awning cloth is made from hard-wearing vinyl material with a transparent acrylic coating.



## HOUSING COLOURS

The Dometic PerfectRoof PR 2000 awning for Fiat Ducato is available in three housing colours.





# PERFECTROOF PR 2000 VAN KITS

## KIT PERFECTROOF PR 2000 DUCATO / BOXER / JUMPER

Complete awning assembly kit for Fiat, Citroën and Peugeot panel vans

### Scope of delivery

- PR 2000 roof awning
- Telescopic crank
- Ducato H2 adapter in 3 pieces
- Foam sealing strip (2 x 1.5 m)

Length (m)	Extension (m)	Housing Colour	Fabric Colour	Ref. No.
3,25	2,5	ANODISED	GREY HORIZON	9103104097
3,25	2,5	ANTHRACITE	GREY HORIZON	9103104096
3,25	2,5	WHITE	GREY HORIZON	9103104099
3,5	2,5	ANTHRACITE	GREY HORIZON	9103104188
3,5	2,5	WHITE	GREY HORIZON	9103104186
3,5	2,5	ANODISED	GREY HORIZON	9103104187
3,75	2,5	ANTHRACITE	GREY HORIZON	9103104098
3,75	2,5	WHITE	GREY HORIZON	9103104100
3,75	2,5	ANODISED	GREY HORIZON	9103104128
4	2,5	ANTHRACITE	GREY HORIZON	9103104102
4	2,5	WHITE	GREY HORIZON	9103104104
4	2,5	ANODISED	GREY HORIZON	9103104129

## PR 2000 KIT MERCEDES SPRINTER H2

### Complete awning assembly kit

#### Scope of delivery

- PR 2000 roof awning
- Vehicle specific adapter
- Telescopic crank handle
- Foam sealing strip (2 x 1.5 m)

Length (m)	Extension (m)	Housing Colour	Fabric Colour	Ref. No.
3.25	2.50	ANTHRACITE	GREY HORIZON	9103104320
3.75	2.50	ANTHRACITE	GREY HORIZON	9103104321
4.00	2.50	ANTHRACITE	GREY HORIZON	9103104322

## PR 2000 KIT RENAULT MASTER / NISSAN NV400 & VAUXHALL OPEL MOVANO

### Complete awning assembly kit

#### Scope of delivery

- PR 2000 roof awning
- Vehicle specific adapter
- Telescopic crank handle
- Foam sealing strip (2 x 1.5 m)

Length (m)	Extension (m)	Housing Colour	Fabric Colour	Ref. No.
2.60	2.00	ANTHRACITE	GREY HORIZON	9103104313
3.25	2.50	ANTHRACITE	GREY HORIZON	9103104314
3.75	2.50	ANTHRACITE	GREY HORIZON	9103104315
4.50	2.50	ANTHRACITE	GREY HORIZON	9103104316

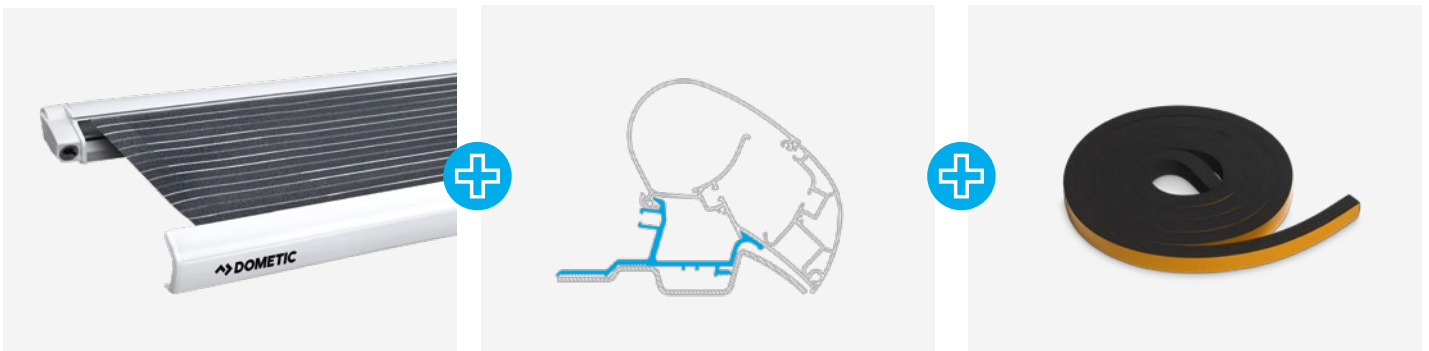
## PR 2000 KIT VW CRAFTER & MAN TGE

### Complete awning assembly kit

#### Scope of delivery

- PR 2000 roof awning
- Vehicle specific adapter
- Telescopic crank handle
- Foam sealing strip (2 x 1.5 m)

Length (m)	Extension (m)	Housing Colour	Fabric Colour	Ref. No.
3.25	2.50	ANTHRACITE	GREY HORIZON	9103104317
3.75	2.50	ANTHRACITE	GREY HORIZON	9103104318
4.00	2.50	ANTHRACITE	GREY HORIZON	9103104319





# PERFECTWALL PW 1100 VW T5/T6 AWNING PACKAGE

## COMPLETE SET WITH MATCHING WALL ADAPTER

The sun is beating down and there's no shade in sight? It's drizzling, but you want to enjoy your coffee outdoors? Then it's time for your smart wall awning to enter the scene. The new Dometic PerfectWall PW 1100 can be set up (and dismantled) faster, safer and easier than

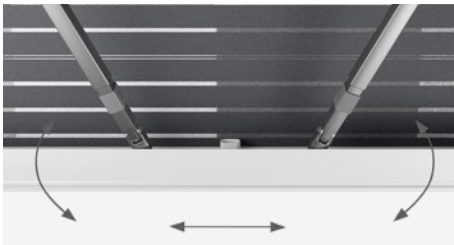
any awning you have seen before. Patented technology – exclusively available from Dometic – makes it happen. No need to bend down or reach up, no hassle whatsoever. Your Dometic PerfectWall gives you unprecedented ease, so you can enjoy the lovely view sooner.

# BENEFITS OF PW 1100

- Easy, ergonomic setup with patented slide-out support legs
- Safe handling – redesigned easy flipper locker system secures the support legs
- Space-saving storage of the tension rafter in the leadrail
- Newly designed awning housing without visible screws
- Lengths from 2.6 to 4.5 m, extensions from 2.0 to 2.5 m
- High quality, one-piece awning fabric – no welding seam
- Telescopic crank
- Wide choice of awning adapters for different types of vehicles

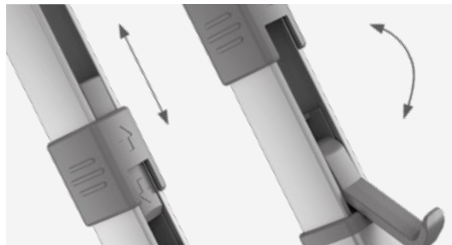
## Scope of delivery:

- PerfectWall PW 1100 wall awning
- Vehicle-specific adapter
- Small fixed crank



### PATENTED SLIDE-OUT-SUPPORTS

For ergonomic setup in upright posture



### PATENTED EASY LOCK FLIPPER

Secures the support legs in place – no accidental unlocking possible



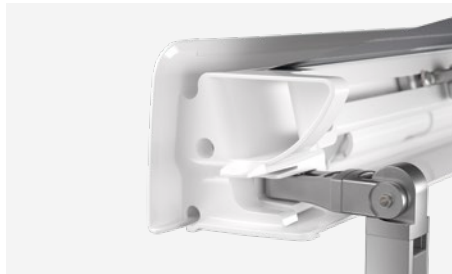
### PATENTED TENSION RAFTER

Stowed away in the front rail after use to save space and avoid damage to the tension rafter



### NEW ELEGANT HOUSING DESIGN

Dometic's new design language: elegant appearance with clean lines and no visible screws



### PATENTED FRONT RAIL SYSTEM

Easy access to the support legs, 100 % tight closing housing



### TELESCOPIC CRANK

For manual operation of the very smooth running gear



### FABRIC COLOURS

The awning fabric is made from hard-wearing vinyl material with a transparent acrylic coating.



### HOUSING COLOURS

The PW 1100 is available in two housing colours.





# PERFECTWALL PW 1100 VAN KITS

## KIT PERFECTWALL PW1100 JUMPY EXPERT PROACE

Complete awning assembly kit

### Scope of delivery

- 2.6 m PW 1100 wall awning
- Vehicle specific adapter
- Short crank handle

Length (m)	Extension (m)	Housing Colour	Fabric Colour	Ref. No.
2.60 (LHT)	2.00	ANTHRACITE	GREY HORIZON	9103104296
2.60 (RHT)	2.00	ANTHRACITE	GREY HORIZON	9103104297

## KIT PERFECTWALL PW1100 DUCATO / BOXER / JUMPER WITH H3 ROOF

Complete awning assembly kit

### Scope of delivery

- PW 1100 wall awning
- Vehicle specific adapter
- Telescopic crank handle

Length (m)	Extension (m)	Housing Colour	Fabric Colour	Ref. No.
3.5	2.50	ANTHRACITE	GREY HORIZON	9103104306
4.00	2.50	ANTHRACITE	GREY HORIZON	9104104307

## KIT PERFECTWALL PW1100 DUCATO FOLDABLE ROOF / IVECO DAILY H2

### Complete awning assembly kit

Length (m)	Extension (m)	Housing Colour	Fabric Colour	Ref. No.
3.00	2.50	ANTHRACITE	GREY HORIZON	9103104308
3.5	2.50	ANTHRACITE	GREY HORIZON	9103104309
4.00	2.50	ANTHRACITE	GREY HORIZON	9103104310
4.5	2.50	ANTHRACITE	GREY HORIZON	9103104311

### Scope of delivery

- PW 1100 wall awning
- Vehicle specific adapter
- Telescopic crank handle

## PW 1100 KIT FORD TRANSIT CUSTOM

### Complete awning assembly kit

Length (m)	Extension (m)	Housing Colour	Fabric Colour	Ref. No.
2.60	2.00	ANTHRACITE	GREY HORIZON	9103104171

### Scope of delivery

- 2.6 m PW 1100 wall awning
- Vehicle specific adapter
- Short crank handle

## PW 1100 KIT VAUXHALL OPEL VIVARO / RENAULT TRAFIC / FIAT TALENTO & NISSAN NV300

### Complete awning assembly kit

Length (m)	Extension (m)	Housing Colour	Fabric Colour	Ref. No.
2.60	2.00	ANTHRACITE	GREY HORIZON	9103104305

### Scope of delivery

- 2.6 m PW 1100 wall awning
- Vehicle specific adapter
- Short crank handle

## PW 1100 VW T5 / T6 KIT

### Complete awning assembly kit for VW T5 / T6 Multivan

Length (m)	Extension (m)	Housing Colour	Fabric Colour	Ref. No.
2.60	2.00	ANTHRACITE	GREY HORIZON	9103104282
2.60	2.00	WHITE	GREY HORIZON	9103104281

### Scope of delivery

- 2.6 m PW 1100 wall awning
- VW T5/T6 Multivan adapter
- Small foldable crank

# EASY TO FIT AWNING TENT

Dometic CampRoom creates an additional roofed area, and is extremely quick and easy to install too. It can be set up by one person without any problems. All windows have zip closures and come standard with mosquito screens, PVC windows and curtains, so the "camp room" can also be used as sleeping space. If you cover the underside of the vehicle with a standard supplied skirt you will get a completely waterproof and wind-breaking construction. The CampRoom is composed of 2 packages; one for the Front including the skirt, pegs, necessary ropes and storage bag and one for both Side panels, including the clamp profiles, pegs, necessary ropes and a storage bag.

## CAMPROOM

The waterproof and wind-breaking awning tent. Simple and quick installation, only 15 – 20 minutes for one person. The front panel simply slides into the lead track of the front rail, the side panels are attached with a clamping profile.



**FAST SET-UP  
BY ONLY  
ONE PERSON**



## DOMETIC CAMPROOM FRONT

Length (m)	Extension (m)	Colour grey
3.25	2.50	9103103925
3.50	2.50	9103103926
3.75	2.50	9103103927
4.00	2.50	9103103928

## DOMETIC CAMPROOM SIDE PANELS PR

Size	Extension (m)	Height (m)	Colour grey
Medium	2.50	2.30 – 2.59	9103103938
Large	2.50	2.60 – 2.89	9103103939
Special Van sides H2*	2.50	–	9103103940

\* For Fiat Ducato H2, Peugeot Boxer H2, Citroën Jumper H2, Mercedes Sprinter H2 and Volkswagen Crafter H2

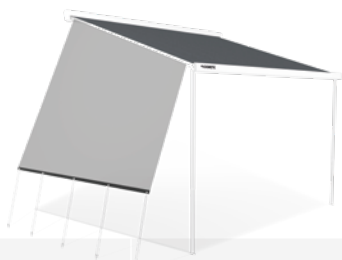


# SUN & RAIN PROTECT ADDITIONAL PROTECTION SUN, RAIN AND WIND

- Panoramic window
- Protects against rain and wind down to the ground
- Simply tighten with ladder band
- Can be modulated with wind protection skirt
- Simple setup
- Can be used left and right
- Supplied with the necessary tension rafter, ropes and pegs



## SUNPROTECT SIDE



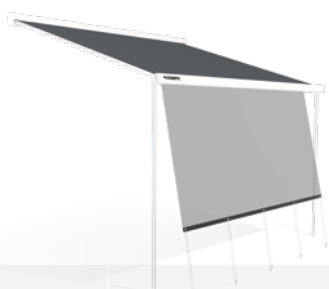
Size	For awning width (m)	Height (m)	Ref. No.
SMALL	2.50	2.00 – 2.29	9103103950
MEDIUM	2.50	2.30 – 2.59	9103103951

## RAINPROTECT DE LUXE SIDE



Size	For awning width (m)	Height (m)	Ref. No.
SMALL	2.50	2.00 – 2.29	9103103967
MEDIUM	2.50	2.30 – 2.59	9103103968

## SUNPROTECT FRONT



For awning width (m)	Extension (m)	Ref. No.
2.60	1.40	9103103941
3.00	1.40	9103103942
3.50	1.40	9103103943
3.75	1.40	9103103944
4.00	1.40	9103103945
4.50	1.40	9103103946

## RAINPROTECT FRONT



For awning width (m)	Extension (m)	Ref. No.
2.60	1.40	9103103954
3.00	1.40	9103103955
3.50	1.40	9103103956
3.75	1.40	9103103957
4.00	1.40	9103103958
4.50	1.40	9103103959



## DOMETIC RAINTEC RT 100

Good news for Fiat Ducato owners! Our rain gutter both prevents rain getting in the vehicle while door is open and operates as a handy exterior light.

- Input power: 8 – 16 volts
- Power: 4,8 watts
- W x H x D: 1500 x 32 x 16 mm
- Light sources: SMD-LED-Dioden (Energy class A)
- Material: Aluminium
- Light colour: 3150 K (warm white)
- Energy consumption in 1000 h.: 7 kWh
- Luminous flux: 435 Lumen
- Life span: 50,000 h
- Weight: approx. 480 g

Deep black / Ref. No. 9106505301

Fiat white / Ref. No. 9106505302

**Optional accessory** / Remote control for LED lights and SMD flexi-strips / Ref. No. 9106504080



Integrated LED light strip

## DOMETIC ADAPTER FRAME

Adapter frame for compensation the edges on the Fiat Ducato

- Hassle-free installation
- Designed for Micro Heki roof lights
- For openings sized 280 x 280 mm

Ref. No. 9104116108

## DOMETIC MICRO-HEKI-AF

Adapter frame required for installing a Micro Heki in roofs with a thickness of 43 – 60 mm.

Ref. No. 9104118059



# DOMETIC MICRO HEKI

Long awaited and here at last: a roof light for the bathroom! Designed for a roof opening of 280 x 280 mm, Micro Heki is the smallest roof light in the Dometic range. Its features, however, leave nothing to be desired. The elegant inner frame integrates a singlepleated optional darkening blind and a fly screen, which can be adjusted separately as required. You can play with shade and

light, let fresh air in and keep insects out and your your smallest room on board will always be well ventilated, dry and neat. Micro Heki comes with a double-glazed roof dome, which is tinted on the outside and opens in two steps up to a maximum angle of 50°. A special locking device keeps the opened window firmly in place.



## DOMETIC MICRO HEKI 280 X 280

This ultra-compact roof light was specially designed for the bathroom area. It fits into a roof opening of 280 x 280 mm and can be opened and closed with a hand-lever system. For motorhomes and caravans.

- Model available with inner fly screen (can be adjusted separately) and optional darkening
- Model available with or without forced ventilation
- Maximum opening angle: 50°
- Double acrylic glazing, tinted on the outside
- Lockable vent position
- For roof thickness of 23–42 mm

Roof window with flyscreen and forced ventilation /  
Ref. No. 9104117434

Roof window with flyscreen, without forced ventilation /  
Ref. No. 9104117435

Roof window with blinds, flyscreen and forced ventilation /  
Ref. No. 9104117679

Roof window with blinds and flyscreen, without forced ventilation /  
Ref. No. 9104117680



### SAFELY LOCKED IN PLACE

The glass dome is safely locked, so it won't slam down when the wind blows



### PRIVACY AND FRESH AIR

The pleated darkening blind smoothly slides to any position



### BLIND PLUS FLY SCREEN

Can be adjusted separately to suit the situation at hand

# DOMETIC MINI HEKI STYLE

Every vehicle instantly seems so much more inviting! Despite their compact standard sizes, the Mini Hekis provide the optimum amount of light. Both models feature a lightly tinted, aerodynamically formed glass dome. The Mini Heki Style even features double glazing, and can be opened in three different positions (incl. poor weather position). The single glazed Mini Heki S can be opened to all sides using operating handles. The Mini Hekis are equipped with a single-pleated darkening screen and a fly screen.

- Opening dimensions 400 x 400 mm
- Inner frame with darkening and fly screen
- Easy to operate using the lever system
- Spoilers to minimise noise available as an accessory



For standard roof openings of  
400 x 400 mm

## DOMETIC MINI HEKI STYLE

This RV roof light, featuring a handle and a double acrylic glazing, fits neatly into a standard 400 x 400 mm roof opening. Its inner frame integrates a darkening blind and fly screen. Both can be adjusted separately to provide shade, privacy and insect protection. Using the hand lever, you can open the dome to three positions: fully open, half open and bad-weather position. The Mini Heki Style is suitable for roof thicknesses of 25–42 mm or 43–60 mm. It is available with or without forced ventilation.

- Opens to three positions: fully open, half-open, and bad-weather position
- Dome with double acrylic glazing
- Special shaped glass dome is aerodynamic
- Handle-operated
- Without or without forced ventilation

Roof window with forced ventilation, roof thickness 25–42 mm

Ref. No. 9104116244

Roof window with forced ventilation, roof thickness 43–60 mm

Ref. No. 9104116245

Roof window without forced ventilation, roof thickness 25–42 mm

Ref. No. 9104116242

Roof window without forced ventilation, roof thickness 43–60 mm

Ref. No. 9104116243



**OPERATION WITH CRANK**



**WITH DARKENING BLIND AND FLY SCREEN**



**PERFECT FIT FOR STANDARD  
400 X 400 MM ROOF OPENING**

## DOMETIC MIDI HEKI STYLE 700 X 500

Open up your vehicle to fresh air and light! This upgraded version of the Midi Heki Style roof light has improved safety features, aerodynamics, appearance and maintenance. With well-proven benefits such as the darkening blind and fly screen, as well as hassle-free cleaning, it ensures comfort and convenience while you're on the road.

- Separately adjustable darkening and fly screens
- Well insulated dome with double acrylic glazing
- Improved aerodynamics reduce by 20 %
- Hinge and lock integrated into frame for improved safety and mechanical reliability
- Opens to three positions: fully open, half-open, and bad-weather position
- With or without forced ventilation
- Modern design for stylish interior and exterior appearance

Roof window with lever, white, with forced ventilation, 700 x 500 mm/ Ref. No. 9104120057

Roof window with lever, white, without forced ventilation, 700 x 500 mm/ Ref. No. 9104120058

Roof window with crank, white, with forced ventilation, 700 x 500 mm/ Ref. No. 9104120059

Roof window with crank, white, without forced ventilation, 700 x 500 mm/ Ref. No. 9104120060

Roof window with lever, grey, with forced ventilation, 700 x 500 mm/ Ref. No. 9104121199

Roof window with lever, grey, without forced ventilation, 700 x 500 mm/ Ref. No. 9104121200

Roof window with crank, grey, with forced ventilation, 700 x 500 mm/ Ref. No. 9104121201

Roof window with crank, grey, without forced ventilation, 700 x 500 mm/ Ref. No. 9104121202



Also available in grey



**WITH CRANK**



**WITH LEVER**



**LOCKING DEVICE AND HINGE  
INTEGRATED IN THE FRAME**



# DOMETIC S7P ALUMINIUM FRAME WINDOWS

**SUITABLE FOR FIAT DUCATO, PEUGEOT BOXER AND CITROËN JUMPER**

Curvature radius of 5000 mm: the slightly curved outside makes Dometic S7P windows ideal for panel vans. Powder-coated aluminium profiles reduce the weight, guarantee excellent insulation

and a highgrade surface finish. Their unique design, combined with a matching blind system, makes the aluminium windows a genuine alternative to polyurethane windows.

## DOMETIC S7P WINDOW

Hinged window



Size B x H (mm)	Overall size B x H (mm)	Space size B x H (mm)	Clearance dimension B x H (mm)	Weight (kg)	Ref. No.
280 x 380	308 x 408	280 x 380	230 x 330	2.9	9104116042
490 x 500	518 x 528	490 x 500	440 x 450	4.0	9104116041
560 x 465	588 x 493	560 x 465	510 x 415	4.5	9104116040
700 x 510	728 x 538	700 x 510	650 x 460	4.8	9104116039
750 x 465	778 x 493	750 x 465	700 x 415	4.8	9104116038
818 x 315	843 x 343	818 x 315	768 x 265	4.6	9104116037
960 x 450	988 x 478	960 x 450	910 x 400	5.6	9104116036
985 x 465	1013 x 493	985 x 465	935 x 415	6.1	9104116035

## ACCESSORIES – CAR PLISSEE S7P FENSTER

It provides a single pleated darkening screen and a fly screen that can be clipped together enabling both to be conveniently adjusted, to any position using only one hand.

Size B x H (mm)	Window size B x H (mm)	Colour	Ref. No.
233 x 352	280 x 380	creme	9104116029
443 x 472	490 x 500	creme	9104116030
513 x 437	560 x 465	creme	9104116018
653 x 482	700 x 510	creme	9104116019
703 x 437	750 x 465	creme	9104116020
771 x 287	818 x 315	creme	9104116021
913 x 422	960 x 450	creme	9104116022
938 x 437	985 x 465	creme	9104116044



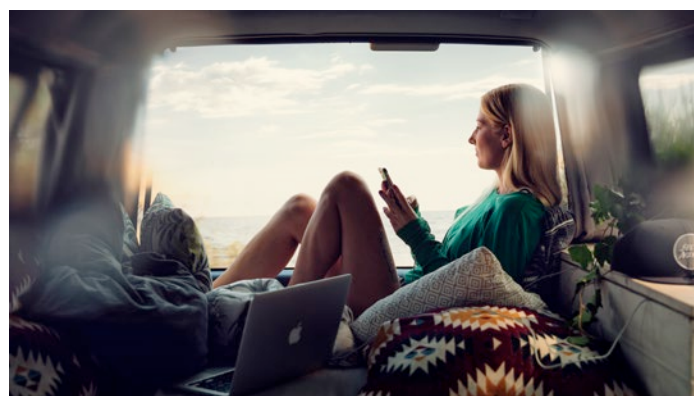
FLY SCREEN

DARKENING

## ACCESSORIES – FIXING KIT FOR S7P WINDOW

The fixing kits matching the various window sizes are indispensable installation accessories for S7P aluminium windows; they make installation very easy. Mounting brackets and screws for the existing wall thickness are included.

Wall thickness (mm)	Ref. No.
22 – 23	9104116094
24 – 25	9104116095
26 – 27	9104116096
28 – 29	9104116097
30 – 31	9104116098
32 – 33	9104116099
34 – 35	9104116100
36 – 37	9104116101
38 – 39	9104116102
40 – 41	9104116103
42 – 43	9104116104





# DOMETIC SP 300 INCREASED PRIVACY AND CLIMATE PROTECTION

## PROTECTS FROM HEAT AND COLD

Late risers and privacy lovers will love the new SP 300 side window darkening system, which was custom-made for the Fiat Ducato and same-design panel vans. Fitted on both sides and combined

with our FP 300 windscreen blind, it provides smart all-around protection against sun, cold and prying eyes.

### NEW DOMETIC SP 300

#### Side window blind

- Double-pleated Duette honeycomb material for maximum insulation against heat and cold
- New guide panel for improved privacy and darkening effect
- Fast and easy installation, without disassembly of any door components
- About 40 mm clearance for better visibility of the little passenger mirror
- Ultra-flat handle bar for convenient operation
- Flawless visible surface – looks like an integrated solution
- Light weight of only 1.2 kg per side – much lighter than competitor systems

Ref. No. 9104122616



Custom-fit for Fiat Ducato models X250 and X290 as well as the same design Peugeot Boxer and Citroën Jumper models.



# TAILOR-MADE FOR FIAT DUCATO AND THE LIKES

FP 300



FP 200



FP 300: Custom-made for Fiat Ducato X250 and X290 as well as the same-design Peugeot Boxer und Citroën Jumper models. Not suitable for vehicles with inside rear-view mirror or side airbag.

## DOMETIC FP 300 / FP 200

This pleated windscreen blind was specially designed for the Fiat Ducato and similar models, such as the Peugeot Boxer and Citroën Jumper from model year 07/2006. Enjoy greater privacy from prying eyes and maintain comfortable temperatures by keeping out heat or cold. It is quick and easy to install and suitable for left- and right-hand-drive vehicles.

- Double-pleated honeycomb material for maximum insulation against heat and cold
- Bottom-to-top operation of front screen – optimal privacy protection
- Ultra-fast installation – no need to dismantle existing components!
- Slim upper blind
- Specially developed for vehicles without inside mirror and without side airbag
- Suitable for vehicles with a rain sensor box

Dometic FP 300

Suitable for vehicles with a rain sensor box  
Ref. No. 9104121168

Dometic FP 200

Suitable for vehicles with inside rear-view mirror  
Ref. No. 9104116564



### TAILOR-MADE

Snug-fitting, straight guide rail is specially designed for vehicles without inside mirror



### MAINTAIN SOUND QUALITY

Side blinds designed with recesses for the speakers on the A column



### QUICK INSTALL

Set up in minutes without the need to dismantle the A column or sun visors

# DOMETIC 10 SERIES RC COMPRESSOR POWER FOR CAMPERVANS

What matters to you when you are setting out in your campervan? Being free and autonomous every day, always able to change course spontaneously? Discovering unknown territory? Go ahead – the compressor refrigerators in the Dometic 10 series give you all the independence you want. Despite their compact outer dimensions,

they have impressive cooling power, and even a patented removable freezer compartment. That means you will be well supplied with everything at all times – even if you cannot buy fresh food every day, and no matter where your adventure takes you.



**Handy handle**  
Convenient opening thanks to a full-height handle



**DOUBLE HINGED  
DOOR – OPENS TO  
THE LEFT  
AND RIGHT!**



#### CONVENIENT CONTROL PANEL

LED display for ON/OFF, cooling stage and operating mode (Standard/Silent/Boost)



#### LED LIGHT

For uniform illumination of the entire cooling compartment



#### PATENTED REMOVABLE FREEZER COMPARTMENT

Makes more room for cooling if required



### DOMETIC RC 10.4 70

Compressor refrigerator, 70 l, LED display

- Best-in-class cooling performance
- Maximum flexibility due to patented removable freezer compartment
- Ventilation only via front panel - no additional opening necessary
- Pleasantly quiet and economical operation in night mode
- Boost function for fast cool-down of food items
- Two-point locking mechanism for increased safety

Ref. No. 9105204621



### DOMETIC RC 10.4 90

Compressor refrigerator, 90 l, LED display

- Best-in-class cooling performance
- Maximum flexibility due to patented removable freezer compartment
- Ventilation only via front panel - no additional opening necessary
- Pleasantly quiet and economical operation in night mode
- Boost function for fast cool-down of food items
- Two-point locking mechanism for increased safety

Ref. No. 9105204623

## ABSORPTION REFRIGERATOR FOR CAMPERVANS

### DOMETIC RMV 5305

Absorption refrigerator, 73 l, reversible hinged, AES

Compact outside dimensions make this absorption refrigerator a perfect fit for panel vans. It can be installed high-up into furniture, leaving enough space to fit a wardrobe underneath.

- Noiseless absorption technology
- Automatic Energy Selector
- Space saving design

Ref. No. 9500001325



12 V



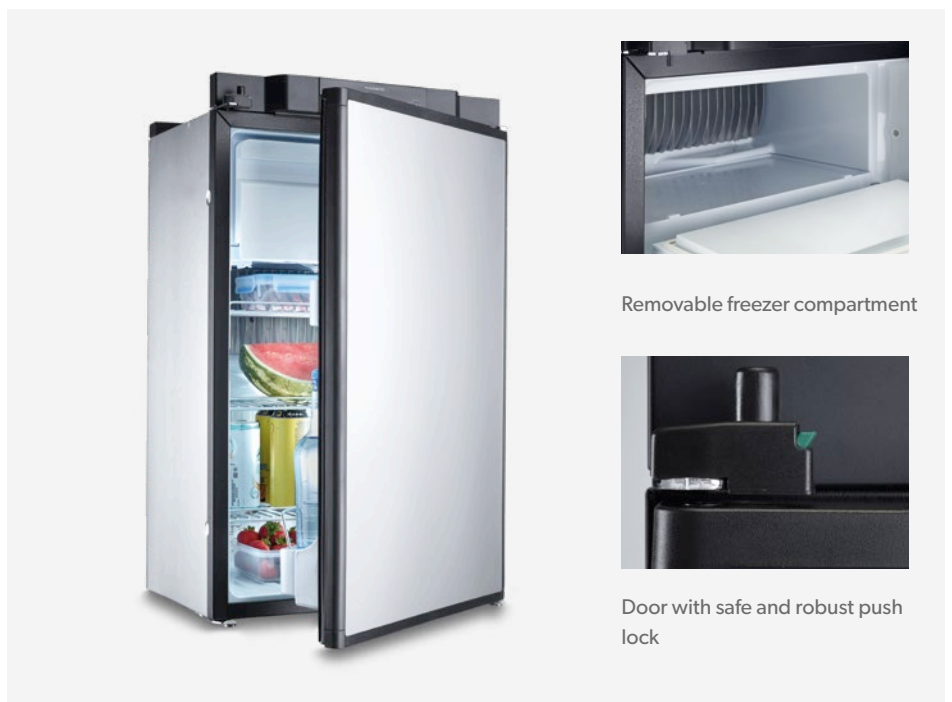
230 V



GAS



NOISELESS



Removable freezer compartment

Door with safe and robust push lock

# COOLMATIC CRX

## THE 3-IN-1 REFRIGERATORS

The compressor refrigerators in the CoolMatic CRX series are ingenious quick change artists. Their trick is no secret, but a patented Dometic invention. The freezer compartment can simply be pulled out to make room for a larger fridge or freezer. The desired

temperature is set on the soft touch control panel which is mounted flush in the inner wall and elegantly integrates the LED light. There's smart electronics behind it: the system regulates the compressor speed therefore achieving energy savings of up to 25 %.

### FRONTS IN STAINLESS STEEL ...



### ... OR WITH A STAINLESS STEEL LOOK

The CoolMatic CRX series, available in three sizes (CRX 50 / CRX 65 / CRX 80 with removable freezer compartment) with stainless steel front or stainless steel effect front.

Small or medium-sized vehicle, single person or big family – nobody has to go without a Dometic CoolMatic refrigerator. You can choose a size between 39 litres and 78 litres, a freezer is always included.

The CRX models are optionally available with a stainless look or genuine stainless steel front panel. The cooling unit of the CRP 40 can be fitted separately to save space; the CRX 65 is the favourite choice for all panel van owners.



Soft-touch control panel



Spacious vegetable compartment across the entire refrigerator width



Installation with standard or flush-mount frame

# SO COOL!

- Choice of three sizes: from 45 to 78 litres in capacity and with standard or newly designed stainless steel door
- Versatile 3-in-1 interior solution: full cabinet cooling, freezing or combination of both (CRX 50, CRX 65 and CRX 80)
- Variable speed compressor with three performance levels for efficient, low-noise operation
- Fan speed automatically adjusts to the ambient temperature: full speed at high temperatures, low speed and superbly silent running when temperatures are low
- Perfect temperature control due to new designed soft-touch control panel
- Door lock with dual function (locking / ventilation)
- Standard or flush-mount installation frame available as accessories



## DOMETIC COOLMATIC CRX 50 / CRX 50S

Compressor refrigerator, 12 / 24 volts DC

- Storage volume: approx. 45 litres, including 4.4 litres freezer compartment
- Weight: 17 / 18 kg
- Dimensions (W x H x D): 380 x 534 x 500 mm

CRX 50 / Ref. No. 9105306565  
CRX 50S / Ref. No. 9105306566



## DOMETIC COOLMATIC CRX 65 / CRX 65S

Compressor refrigerator, 12 / 24 volts DC

- Storage volume: approx. 57 litres, including 7 litres freezer compartment
- Weight: 18 / 19 kg
- Dimensions (W x H x D): 448 x 525 x 545 mm

CRX 65 / Ref. No. 9105306568  
CRX 65S / Ref. No. 9105306569



## DOMETIC COOLMATIC CRX 80 / CRX 80S

Compressor refrigerator, 12 / 24 volts DC

- Storage volume: approx. 78 litres, including 7.5 litres freezer compartment
- Weight: 20 / 21 kg
- Dimensions (W x H x D): 475 x 640 x 528 mm

CRX 80 / Ref. No. 9105306570  
CRX 80S / Ref. No. 9105306571



## DOMETIC COOLMATIC CRP 40 / CRP 40S

Compressor refrigerator, 12 / 24 volts DC

- Patented dual locking system – can also serve for ventilation
- Suitable for flush-mount installation – unit is fitted to the wall! Space-saving luxury.
- Solar operation – runs on solar power wherever the sun shines
- Stainless steel effect front
- Classic premium design
- Capacity: approx. 39 l (5 l freezer)

CRP 40 / Ref. No. 9105204517  
CRP 40S / Ref. No. 9105204441

# DRAWER FRIDGES AND FREEZERS

## PULL OUT AND ENJOY!

Who doesn't appreciate seeing their food and provisions smoothly sliding out towards them? Our drawer fridges have a convenient way of letting you keep track of what you have. Bottles are firmly secured with a bracket. The removable freezer compartment makes room for more refrigeration if required. Both drawer fridges available in two versions: with a stainless steel front panel or in matt silver. The perfect cooling solution, particularly for smaller vehicles.



12/24 V

### DOMETIC COOLMATIC CRD 50 / CRD 50S

Pull out fridge and freezer, 12 / 24 volts DC

- Storage volume: approx. 38.5 litres, freezer compartment: approx. 6 litres
- Weight: 17 / 18 kg
- Power consumption:  
1.5 Ah/h at +25 °C ambient temperature,  
1.8 Ah/h at +32 °C ambient temperature,  
both at +5 °C interior temperature

CRD 50, stainless steel look front panel / Ref. No. 9105306581

CRD 50S, stainless steel panel / Ref. No. 9105306582



12/24 V

### DOMETIC COOLMATIC CRX 65D / CRX 65DS

Pull out fridge and freezer, 12 / 24 volts DC

- Storage volume: approx. 57 litres, freezer compartment: approx. 7 litres
- Weight: 20 / 21 kg
- Power consumption:  
1.14 Ah/h at +25 °C ambient temperature,  
1.8 Ah/h at +32 °C ambient temperature,  
both at +5 °C interior temperature

CRX 65D, stainless steel look front panel / Ref. No. 9105306540

CRX 65DS, stainless steel panel / Ref. No. 9105306548

# TOP-LOADING COMPRESSOR FRIDGES



## DOMETIC COOLMATIC CB 36

Top-loading built-in compressor refrigerator, 36 l, 12 / 24 volts DC

This 36 l fridge is specially designed for confined spaces. Offering outstanding cooling performance at moderate ambient temperature, it is also suitable for solar operation.

- Space saving, compact design is ideal for small spaces
- Suitable for solar power
- Superb cooling performance. Range: +10 °C to -12 °C
- Detachable cooling unit with 1.5 m supply cable for convenient positioning

Ref. No. 9105204434

## DOMETIC COOLMATIC CB 40

Top-loading built-in compressor refrigerator, 40 l, 12 / 24 volts DC

This 40 l fridge is specially designed for confined spaces. Offering outstanding cooling performance at moderate ambient temperature, it is also suitable for solar operation.

- Space saving, compact design is ideal for small spaces
- Suitable for solar power
- Superb cooling performance. Range: +10 °C to -12 °C
- Detachable cooling unit with 1.5 m supply cable for convenient positioning

Ref. No. 9105204435





# DOMETIC CFX3 THE POWER TO BE PRESENT

WITH THE ULTIMATE POWERED COOLER

Take control of outdoor adventures like never before with the Dometic CFX3. Enjoy reliably fresh food and cold drinks thanks to Dometic's market leading VMISO3 variable-speed compressor cooling technology. Its optimized software ensures superior cooling, freezing and energy efficiency. The CFX3 features durable and lightweight fender frames to protect the cooler, making it ideal for use in harsh outdoor environments. Strong, spring-loaded

aluminum handles make it easy to lift and carry. Adjust the cooling temperature of your CFX3 on the TFT display screen or download the Dometic app and roam free without worry. We also offer a range of accessories to get the most out of your cooler, including a durable insulated protective cover and a fridge slide for easy access to your favorite items.



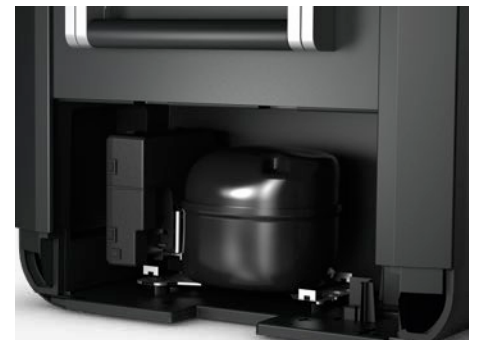
### USER-FRIENDLY INTERFACE

The stylish TFT LCD user interface displays operating status



### RUGGED CONSTRUCTION

Fender frames protect the unit from damage



### OPTIMIZED VMISO3 CONTROLLED COMPRESSOR

Efficient variable-speed cooling



# PACK MORE INTO YOUR ADVENTURE



## NEW DOMETIC CFX3 35

Portable compressor cooler and freezer, 32 l

- Generous storage capacity of 32 l to fit 50 cans
- CFX smartphone app allows temperature control via Bluetooth or WiFi and provides performance history
- Powerful VMSO3 controlled compressor enables refrigeration and deep-freezing down to  $-22^{\circ}\text{C}$  and optimum power consumption
- Heavy-duty yet lightweight construction, fender frame protected edges and fully insulated lid with aluminium hinges
- Built-in TFT user interface displays operating status

Ref. No. 9600025324



## NEW DOMETIC CFX3 45

Portable compressor cooler and freezer, 40 l

- Generous storage capacity of 40 l to fit 67 cans
- CFX smartphone app allows temperature control via Bluetooth or WiFi and provides performance history
- Powerful VMSO3 controlled compressor enables refrigeration and deep-freezing down to  $-22^{\circ}\text{C}$  and optimum power consumption
- Heavy-duty yet lightweight construction, fender frame protected edges and fully insulated lid with aluminium hinges
- Built-in TFT user interface displays operating status
- Includes removable wire baskets with divider for optimal storage organisation

Ref. No. 9600025326



## NEW DOMETIC CFX3 55

Portable compressor cooler and freezer, 48 l

- Generous storage capacity of 48 l to fit 85 cans
- CFX smartphone app allows temperature control via Bluetooth or WiFi and provides performance history
- Powerful VMSO3 controlled compressor enables refrigeration and deep-freezing down to  $-22^{\circ}\text{C}$  and optimum power consumption
- Heavy-duty yet lightweight construction, fender frame protected edges and fully insulated lid with aluminium hinges
- Built-in TFT user interface displays operating status
- Includes removable wire baskets with divider for optimal storage organisation

Ref. No. 9600025328



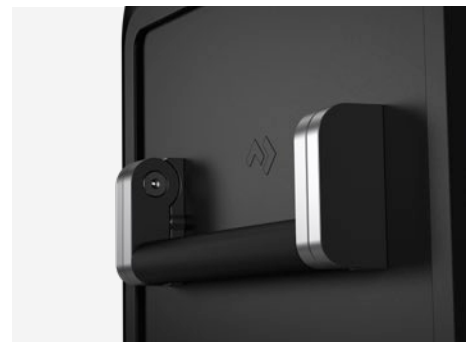
### FLEXIBLE POWER OPTIONS

Powered by 100 – 240 V AC, 12/24 V DC or battery power, solar compatible



### NEW CFX3 APP

Temperature control via CFX3 App



### EASY TO CARRY

Strong aluminum carry handles

# COOLFREEZE CFX 28 COMPRESSOR-COOLBOX

## OUR MOST POWERFUL COOLER

Energy class A++ and freezer temperatures down to -22 °C! With its CoolFreeze CFX series, the refrigeration specialist Dometic proves how milestones are made. Its specially-developed high-

performance compressor and extra strong insulation have allowed the energy consumption to be reduced by up to 35 % compared to its predecessors.



### DOMETIC COOLFREEZE CFX 28

Portable compressor cooler and freezer, 26 l

- Storage volume: 26 l
- Excellent cooling performance even at extremely high outside temperatures
- Suitable for deep-freezing down to -22 °C
- Very efficient and quiet operation. Suitable for solar operation
- Heavy-duty design with reinforced corners, stainless steel hinges and robust lid coating
- CFX special electronics with digital temperature display

Ref. No. 9600000468

Dometic fixing kit for CFX 28  
Ref. No. 9600000166



#### LED LIGHT

Energy efficient LED interior light



#### USB PORT

USB port for charging small electronic devices



#### DIGITAL DISPLAY

Electronic thermostat with digital temperature display

# EXTREMELY COMPACT

"LIGHT" COMPRESSOR TECHNOLOGY



12/24 V



A++

## DOMETIC COOLFREEZE CF 16

Portable compressor cooler and freezer, 15 l

- Extremely compact, super-slim design
- Refrigeration and deep-freezing
- Compact compressor, therefore lightweight
- Cooler and freezer
- 12 or 24 V DC, 100-240 V AC
- Storage volume 15 l
- Refrigeration from +10 °C to -18 °C

Ref. No. 9600005339

Dometic fixing kit for CF 16  
Ref. No. 9105303708



A++

## DOMETIC COOLFREEZE CF 26

Portable compressor cooler and freezer, 21.5 l

- Extremely compact, super-slim design
- Refrigeration and deep-freezing
- Compact compressor, therefore lightweight
- Cooler and freezer
- 12 or 24 V DC, 100-240 V AC
- Storage volume 21.5 l
- Refrigeration from +10 °C to -18 °C

Ref. No. 9600005341

Dometic fixing kit for CF 26  
Ref. No. 9105303708



reddot design award  
winner 2019

## DOMETIC PLB40

Portable lithium battery, 40 Ah

- Enables you to travel off-grid for longer
- Three-way charging via 12 V socket, solar panel or AC house power
- Extremely lightweight, ergonomically designed stainless steel carry-handle
- Built-in LCD screen displays: capacity, charging status and output
- Specifically designed for Dometic CFX and other powered coolers
- Powerful battery cells provide 512 Wh of energy, 40 Ah
- Can power a Dometic CFX3 45 cooler for up to 53 hours on a single charge (When fridge temperature is +4 °C and ambient temperature +25 °C).

Ref. No. 9600012878



DOMETIC PLB40  
PORTABLE POWER  
FOR 12 V  
DEVICES

# ALL YOU NEED FOR COOKING AND WASHING UP ON THE MOVE

Admittedly, kitchens in motorhomes, caravans and camper vans are far smaller than your kitchen at home, but they can be just as well-equipped. Dometic offers everything you need for a well functioning mobile kitchen.



## DOMETIC MO9722R / MO9722L

Two-burner hob and sink combination with glass lid, 760 x 325 mm

This compact two-burner gas hob and sink combination brings useful kitchen facilities to the smallest of spaces.

- Compact two-burner hob with sink on left or right side
- Heat-resistant safety glass lids provides more work space when closed
- Easy-to-clean detachable pan supports
- Supplied with siphon and rubber seal
- Taps available separately

Dometic MO 9722L / Ref. No. 9102305076

Dometic MO 9722R / Ref. No. 9102305075



## DOMETIC HSG 2370R / HSG 2370L

Two-burner hob and sink combination with glass lid, 900 x 370 mm

A compact two-burner hob with integrated sink, positioned on left or right side, with handy safety glass lid that provides extra work space when closed.

- Compact sink/two-burner hob combination
- Heat-resistant safety glass lid provides more work space when closed
- Sink is positioned on left or right side of burners

Dometic HSG 2370 R / Ref. No. 9103301740

Dometic HSG 2370 L / Ref. No. 9103301738



## DOMETIC HBG 2335

Two-burner gas hob with glass lid, 460 x 335 mm

Convenient and elegant two-burner cooktop with glass lid

- Compact two-burner hob
- Heat-resistant safety glass lid provides more workspace when closed
- Easy-to-clean detachable pan grids

Ref. No. 9103301736



## DOMETIC VA928

Round sink, Ø 400 x 130 mm

- Stylish round hand basin
- Made from easy to clean and tough stainless steel

VA928 / Ref. No. 9102300051

# TRAVEL IN COMPLETE COMFORT AND CONVENIENCE

We want you to travel in complete comfort and convenience. This is the idea behind our Hygiene & Sanitation range. It provides you

with well engineered sanitation solutions and practical, easy-to-use hygiene accessories for undiminished holiday enjoyment.



## DOMETIC 972 / 976

Portable toilet, white and gray

- Space saving with a 9.8 l or 18.9 l waste holding tank
- Portable so you can take it anywhere
- Less mess due to an extra-long, pivoting discharge spout
- Less pump with a push button operation
- Less splash as the tank level indicator protects against overflow
- Home comforts of an adult-sized seat

Dometic 972 / 9.8 l waste holding tank

Ref. No. 9108557679

Dometic 976 / 18.9 l waste holding tank

Ref. No. 9108557681



## DOMETIC POWERCARE TABS

Tank cleaner for waste holding tanks, 16 tabs

- No spills or mess
- The dose is pre-measured so no possible overdosing and waste
- Easy storage in a handy tub
- Suitable for all portable and cassette toilets
- Fast breakdown of waste without the build-up of unpleasant gas or odors

Ref. No. 9600000125



## DOMETIC GREENCARE TABS

Sanitation additive for waste holding tanks, 16 tabs

- An environmentally friendly toilet tab that doesn't cost the earth
- The dose is pre-measured – preventing overdose and waste
- No spills or mess
- Suitable for all portable and cassette toilets
- Fast breakdown of waste without the build-up of unpleasant gas or odours
- Ready to use tabs in a soluble film

Ref. No. 9600000133



## DOMETIC TANK CLEANER

Tank cleaner for waste holding tanks, 10 tabs

- Easy and economical dosing with tabs
- Effortless cleaning with active foam
- Gentle on the environment
- 10 tabs per tub

Ref. No. 9600000150

# SAFER REVERSING WITH BIKE RACK CAMERAS

A bike rack is a practical add-on for many motorhomers. However, unfortunately, it usually blocks the rear view while maneuvering. The Dometic CAM200 bike rack camera overcomes this safety risk with a smart patented solution. The compact device integrates two camera eyes, individually adjustable to achieve the best possible viewing angle. The smart electronic system automatically switches

between the two cameras to give you a perfect rear view even when the bikes are attached. And one last practical detail: the system cable of the camera is detachable, so you can effortlessly remove the bike rack.

## TWO INDIVIDUALLY ADJUSTABLE CAMERA EYES



## NEW DOMETIC PERFECTVIEW CAM200

Bike rack camera

- Unblocked rear view – prevents accidents and also protects your bikes
- Two camera modules – separately adjustable to the best possible viewing angle
- Detachable system cable for easy removal of the bike rack
- Automatic switching between the two cameras
- Dust- and waterproof according to IP29K

CAM200 / Ref. No. 9600026080

CAM200 NAV/ Ref. No. 9600026477



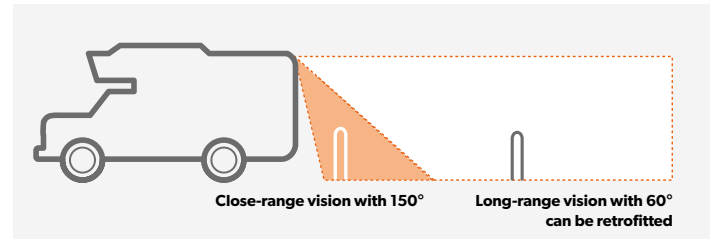
Dometic PerfectView CAM200 is available in combination with the following Dometic monitors:

SYSTEM		
	<b>RVS5200</b>	<b>RVS7200</b>
	<b>5" Colour LCD monitor M55LAHD 9600026564</b>	<b>7" Colour LCD monitor M75LAHD 9600026566</b>



# DOMETIC PERFECTVIEW CAM 35

PerfectView CAM 35 is an innovative camera solution that was specially conceived for FIAT Ducato X250 and X290 as well as its sister models. The vehicle-specific design gives a snug fit and facilitates installation. There's no need to drill holes into the bodywork, and no need to apply any sealant either. The camera housing is tightly sealed with a silicon gasket to keep moisture out. For perfect aesthetics, it can be painted in the colour of the vehicle.



## SIMPLE UPGRADING

The compact brake light console of the CAM 35 integrates a 150° wide-angle lens for perfect close-range vision while reversing. An additional 60° lens for long-range vision when driving forward can be retrofitted with ease.

## DOMETIC PERFECTVIEW CAM 35 NAV

Brake light console camera with NAV adapter, 150° diagonal

- Supplied with an adapter for connection to multimedia systems or navigation devices
- 150° wide-angle lens with large picture angle
- For FIAT Ducato X250, X290 (and its sister models)
- Can be upgraded with an additional far view camera (60° diagonal, optional)

Ref. No. 9102000133

Far view camera, upgrade set for CAM 35

Ref. No. 9102000135



Dometic PerfectView CAM35 is available in combination with the following Dometic monitor or moniceivers

SYSTEM	 RVS536	 MC402 BUNDLE
 CAM 35 TWIN NAV	5" Colour LCD monitor M55LAHD 9600000561	2 DIN moniceiver with 6.2" monitor 9600023346
 CAM 35 REAR NAV		2 DIN moniceiver with 6.2" monitor 9600023347



## DOMETIC PERFECTVIEW MC 402

2 DIN moniceiver with 6.2" monitor

For more than just listening to music on the move, this versatile multi media player with 6.2" touchscreen display combines entertainment functions, from radio to MP3 and DVD player. It can even be combined with a reversing camera to be used as a parking aid. From music to movies, your one-stop entertainment mix.



## RADIO AND SOUND

- Radio reception at its best with the latest high-end Blaupunkt tuner generation
- Parametric equaliser
- Powerful amplifier with 4 x 45 watts max. output

**AUSTRALIA**

**DOMETIC AUSTRALIA PTY. LTD.**

1 John Duncan Court  
Varsity Lakes QLD 4227  
Tel +61 7 55076000  
Fax +61 7 55076001  
Mail sales@dometic-waeco.com.au

**AUSTRIA & CZECH REPUBLIC**

**DOMETIC AUSTRIA GMBH**

Neudorferstrasse 108  
A-2353 Guntramsdorf  
Tel +43 2236 908070  
Fax +43 2236 90807060  
Mail info@dometic.at

**BELGIUM**

**DOMETIC BRANCH OFFICE BELGIUM**

Lourdesstraat 84  
B- 8490 Geluwe  
Tel +32 2 3598040  
Fax +32 2 3598050  
Mail info@dometic.be

**DENMARK**

**DOMETIC DENMARK A/S**

Nordensvej 15, Taulov  
DK-7000 Fredericia  
Tel +45 75585966  
Fax +45 75586307  
Mail info@dometic.dk

**FINLAND**

**DOMETIC FINLAND OY**

Valimotie 15  
FIN-00380 Helsinki  
Tel +358 20 7413220  
Mail info@dometic.fi

**FRANCE**

**DOMETIC SAS**

ZA du Pré de la Dame Jeanne  
B.P. 5  
F-60128 Plailly  
Tel +33 3 44633525  
Fax +33 3 44633518  
Mail vehiculesdeloisirs@dometic.fr

**GERMANY**

**DOMETIC GERMANY GMBH**

Hollefeldstraße 63  
D-48282 Emsdetten  
Tel +49 (0) 2572 879-0  
Fax +49 (0) 2572 879-300  
Mail info@dometic-waeco.de

**HONG KONG**

**DOMETIC ASIA CO., LIMITED**

Suites 2207-2210, 22/F Tower 1  
The Gateway, 25 Canton Road  
Tsim Sha Tsui, Kowloon  
Tel +852 2456 5199  
Fax +852 2466 5553  
Mail info.ap@dometic.com

**HUNGARY**

**DOMETIC ZRT. SALES OFFICE**

H-1147 Budapest  
Kerekgyártó u. 5.  
Tel +36 1 468 4400  
Fax +36 1 468 4401  
Mail budapest@dometic.hu

**ITALY**

**DOMETIC ITALY S.R.L.**

Via Virgilio, 3  
I-47122 Forlì (FC)  
Tel +39 0543 754901  
Fax +39 0543 754983  
Mail vendite@dometic.it

**JAPAN**

**DOMETIC KK**

Maekawa-Shibaura, Bldg. 2  
2-13-9 Shibaura Minato-ku  
Tokyo 108-0023  
Tel +81 3 5445 3333  
Fax +81 3 5445 3339  
Mail info@dometic.jp

**MEXICO**

**DOMETIC MX, S. DE R. L. DE C. V.**

Circuito Médicos No. 6 Local 1  
Colonia Ciudad Satélite  
CP 53100 Naucalpan de Juárez  
Estado de México  
Tel +52 55 5374 4108  
Fax +52 55 5393 4683  
Mail info@dometic.com.mx

**NETHERLANDS**

**DOMETIC BENELUX B.V.**

Ecustraat 3  
NL-4879 NP Etten-Leur  
Tel +31 76 5029000  
Fax +31 76 5029019  
Mail info@dometic.nl

**NEW ZEALAND**

**DOMETIC NEW ZEALAND LTD.**

PO Box 12011  
Penrose  
Auckland 1642  
Tel +64 9 622 1490  
Fax +64 9 622 1573  
Mail customerservices@dometic.co.nz

**NORWAY**

**DOMETIC NORWAY AS**

Elveveien 30B  
N - 3262 Larvik  
Tel +47 33428450  
Fax +47 33428459  
Mail info@dometic.no

**POLAND**

**DOMETIC POLAND SP. Z O.O**

ul. Puławska 435A  
PL-02-801 Warszawa  
Tel +48 22 414 3200  
Fax +48 22 414 3201  
Mail info@dometic.pl

**PORTUGAL**

**DOMETIC SPAIN, S.L.**

Branch Office em Portugal  
Rot. de São Gonçalo nº 1– Esc. 12  
2775-399 Carcavelos  
Tel +351 219 244 173  
Fax +351 219 243 206  
Mail info@dometic.pt

**RUSSIA**

**DOMETIC RUS LLC**

Komsomolskaya square 6 – 1  
RU-107140 Moscow  
Tel +7 495 780 79 39  
Fax +7 495 916 56 53  
Mail info@dometic.ru

**SINGAPORE**

**DOMETIC PTE LTD**

18 Boon Lay Way  
06-141 Trade Hub 21  
Singapore 609966  
Tel +65 6795 3177  
Fax +65 6862 6620  
Mail dometic@dometic.com.sg

**SLOVAKIA**

**DOMETIC SLOVAKIA S.R.O.**

Sales Office Bratislava  
Nádražná 34/A  
900 28 Ivanka pri Dunaji  
Tel +421 2 45 529 680  
Fax +421 2 45 529 680  
Mail bratislava@dometic.com

**SOUTH AFRICA**

**DOMETIC (PTY) LTD.**

Regional Office South Africa &  
Sub-Saharan Africa  
2 Avalon Road, West Lake View  
Ext 11, Modderfontein 1645  
Tel +27 87 3530380  
Mail info@dometic.co.za

**SPAIN**

**DOMETIC SPAIN S.L.**

Avda. Sierra del Guadarrama, 16  
E-28691 Villanueva de la Cañada  
Madrid  
Tel +34 91 833 6089  
Fax +34 900 100 245  
Mail info@dometic.es

**SWEDEN**

**DOMETIC SCANDINAVIA AB**

Gustaf Melins gata 7  
SE-421 31 Västra Frölunda  
Tel +46 31 7341100  
Fax +46 31 7341101  
Mail info@dometicgroup.se

**SWITZERLAND**

**DOMETIC SWITZERLAND AG**

Riedackerstrasse 7a  
CH-8153 Rümlang  
Tel +41 44 8187171  
Fax +41 44 8187191  
Mail info@dometic.ch

**UNITED ARAB EMIRATES**

**DOMETIC MIDDLE EAST FZCO**

P.O. Box 17860  
S-D 6, Jebel Ali Freezone  
Dubai  
Tel +971 4 883 3858  
Fax +971 4 883 3868  
Mail info@dometic.ae

**UNITED KINGDOM**

**DOMETIC UK LTD.**

Domestic House, The Brewery,  
Blandford St. Mary  
Dorset DT11 9LS  
Tel +44 344 626 0133  
Fax +44 344 626 0143  
Mail sales@dometic.co.uk

**USA**

**DOMETIC RV DIVISION**

1120 North Main Street  
Elkhart, IN 46515  
Tel +1 574-264-2131